

Missy's Warm Fuzzy Tale



Poor, 11-year-old Missy was so uncomfortable when she arrived at SAFe in August. At 18 pounds, she was too large to groom herself. Then, our medical team discovered a **tumor in her ear canal** that could only be removed with specialized surgery.

While planning next steps, Missy was **fostered onsite**. Each day, we gave her ear drops, sanitary wipes, and lots of affection. In return, Missy reminded us to take breaks and serenaded us with chirps and purrs.

With the cost of veterinary care and other expenses on the rise, we weren't sure how we would cover Missy's procedure. Though beloved, Missy was just **one of many cats counting on us**, and we didn't want to let any of them down.

We asked for your help, and the response was overwhelming! **You showed up for Missy when she needed it most**, helping us raise over \$170,000 for her operation and vital Rescue programs.

After surgery and four weeks of recovery in a seasoned foster home, Missy returned to SAFe for her official debut on the Adoption Floor. She had one more heart to steal.



*Missy has helped me learn that **what matters most is to be loved, cared for, and cherished**. She is a gift to me!!*

Missy's adopter

A recent Seattle transplant with a senior kitty at home, Missy's mom fell in love at first sight. **Today, Missy is thriving!**

"I didn't know if she would even be able to do stairs," Missy's adopter says. "Imagine my surprise the first time I let her explore the house and she **SPRINTED** up the stairs and jumped from one couch to the other!"

Thank you for helping cats like Missy!

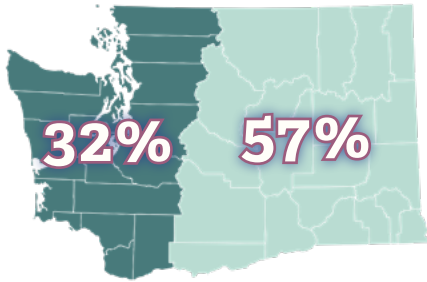
Photo by Sean Nagle-McNaughton

Photo by Kathy Jones
Adopted Feb. 2024
Evie



Saving cats, together.

Seattle Area Feline Rescue
Annual Report | 2024



520 cats
from Western WA

930 cats
from Eastern WA

Intake

Of the **1,632 cats** we took in during 2024, **1,450 (89%)** were from Washington state! The other **182 cats (11%)** came from California, Hawaii, Oregon, Texas, and Louisiana.



Marmalade stretches out



Zoie, foster

Foster Homes

This year, **126 unique families** (including **48 first-timers** to the Rescue) looked after **512 foster cats**. Newborn, under-socialized, and medical cases alike blossomed in their care!

To keep them as comfortable as possible, **60 cats** were adopted directly from foster homes.

It's awesome getting to be a part of so many deserving kitties' journeys.



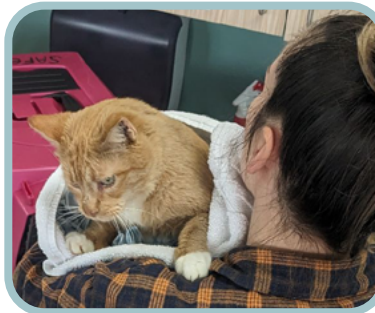
Sherman receives a well-deserved scratch

This is **William**—our primary vehicle for donation pickups, cat transport, and more. Since we started tracking in 2022, our trusty steed has **made 161 trips, logging 5,752 miles.**



*It is a **therapeutic experience** to pet the cats and find homes for them.*

Corrie, SAFE's Volunteer and Shelter Manager, gets **Stuart** ready to go home.



Winston with his adopter

Volunteers

From cleaning enclosures to assisting adoptions, **191 volunteers** clocked **15,242 hours** in 2024. Several specialty roles were added or renewed:

Ringworm Cat Care

giving specialized care to cats being treated for fungal infections.

Shelter Support

providing as-needed departmental aid, e.g., handling cat transfers to and from foster homes.

Medical Support

offers real-world experience for vet assistant students.

*This was our **first time adopting a bonded pair of kittens**, and it is a very adorable thing to witness. They are the perfect match for our family.*



Quote and photo courtesy of Sam and Samara's adopters

Adoptions

Thanks to your support,

1,606 cats

found homes in 2024!

We follow up within one week of adoption. This year, we heard back from **95%** of adopters!

An additional **81 pets** with profiles through SAFE's Home To Home® partnership found successful outcomes.

SAFE has found homes for

15,069 cats

in its **first 10 years** since opening!

All photos courtesy of SAFE Rescue team unless otherwise noted.

Counting Paws | 2024 in Numbers

Medical

No matter what a cat is going through, SAFe's team of vets, vet technicians, and medical assistants is there for them.

From performing **518 in-house spay and neuter surgeries** to tending to **85 ringworm cases**, offering individualized **support and resources to foster homes** or developing **treatment plans** for kitties like the ones on the right, our medical team provides compassionate care to each cat passing through our doors.

Diagnosed with feline immunodeficiency virus (FIV), **Milo** needed dental extractions and eye surgery to feel better before going home in May.



Tiny **Floyd** had the odds stacked against him. He came down with panleukopenia before he was even two weeks old, followed by a series of health troubles. It took nine weeks of intense care, but Floyd made it past this rough start and grew into a healthy, happy kitten!

Save The Dates

MAY
6th – 7th
GiveBIG

SEP
20th
Nine Lives Gala



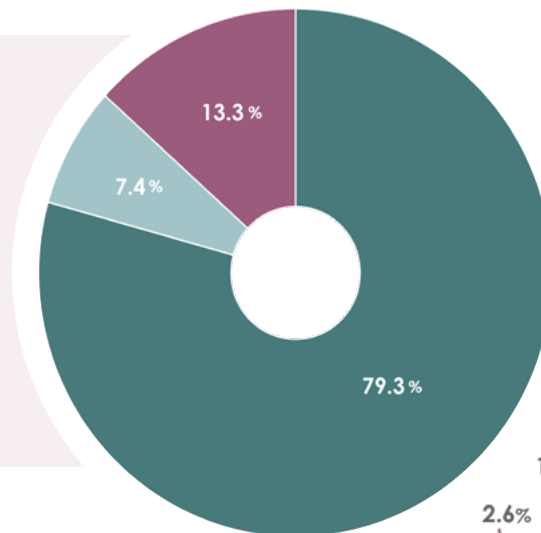
When he first arrived at SAFe, **Elton** was severely malnourished, dehydrated, and missing patches of fur. Our medical and foster teams worked together to nourish him back to health. Once shy, Elton became affectionate as soon as he was feeling better!



Financials

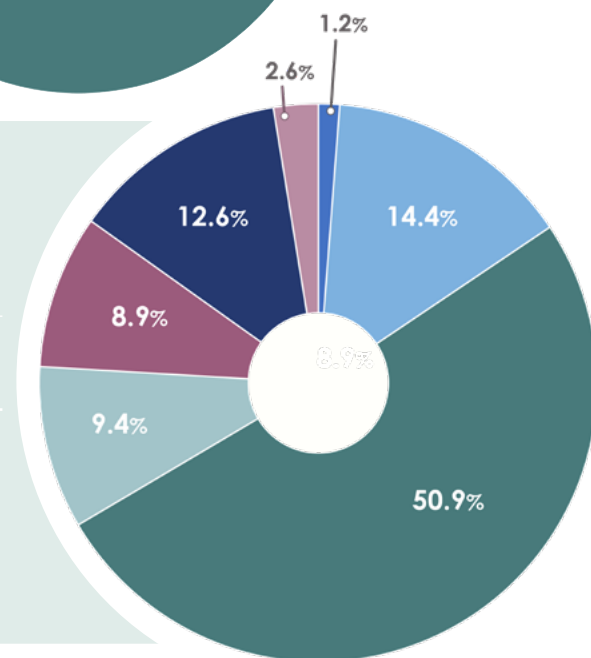
Expenses

Program	\$1,576,763
Administrative	\$146,837
Fundraising	\$264,244
TOTAL	\$1,987,845



General Operating Income

Donations—General Fund	\$956,055	Tenant Improvement Allowance + Misc	\$269,403
Adoption Fees/Other Program Revenue	\$235,933	In-Kind Donations (Donated Items)	\$48,530
Retail Sales (Net)	\$23,013	Grants — General Fund	\$177,007
Nine Lives Gala/Other Events	\$167,407	TOTAL	\$1,877,348



Letter from Emily | Executive Director, SAFe Rescue

Right:
Emily and Pip

Below:
Tommy visits
the Development
Office



During 2024, the first full year in our larger facility, SAFe has had the opportunity to build on the work we've been doing for

over a decade! We can now offer tours and volunteer opportunities to youth and workplace groups, help more partner shelters by taking in **cats that otherwise would not have had a chance**, and support them by sharing programs, protocols and tools.

We all love the warm fuzzy tales so many adopters share, especially when they feature a cat who spent extra time with us, needing medical treatment, behavioral intervention, or extra support through the transition into the home. These updates are constant reminders of the **deep and lasting impact of this work on the lives of people and pets.**

But that impact doesn't end there! We are so thankful to be able to bring in **new clients, volunteers, fosters, adopters, partners, and supporters of all types.** This growth builds resiliency and expands our capacity as community need continues to grow.

The relief we see on the faces of pantry clients who have just learned that we

can provide meals and other supplies to their pets, clinic patients who can finally afford to have their cats seen by a veterinarian, and partners looking for a safe place where cats with ringworm can receive specialty treatment, are just as heartwarming.

The stories from our community share a common thread—**this work changes lives**—both of cats, and the people who love them. Your support and involvement has made this possible. **Thank you for being a part of the SAFe community:** together we are making a difference, helping each other, and building empathy for all living things.

As a founding member of SAFe, I have seen firsthand its amazing **growth, transformation, and dedication** to cat care and the communities SAFe serves.

Eric, longtime donor and supporter



Stella lounges before Adoption Weekend.

Supporting Our Community

Community Wellness Clinics

Once a month, SAFe offers full physical exams to cats in income-qualified households. This year, **236 cats** were seen, for a total of 177 exams, 371 vaccines, 76 microchip insertions, and 275 doses of parasite treatment.



Dr. Bonnie Goldthwaite, DVM, with a patient.

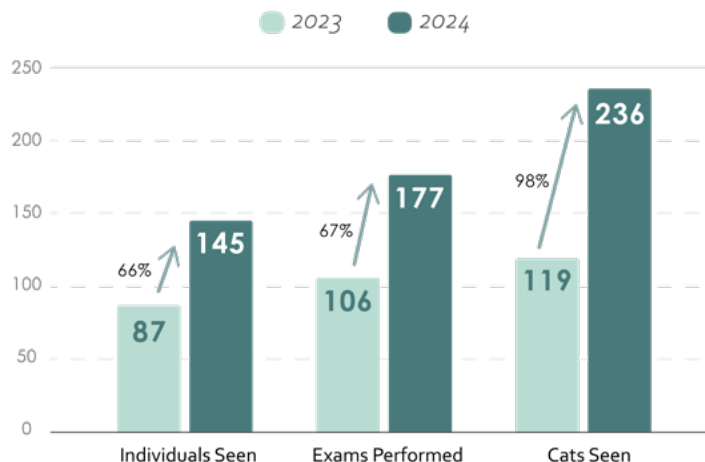
2024 Pet Pantry Numbers

Category	Amount	Growth since 2023
Dry Food	9,790 lbs	10%
Wet Food	21,088 cans	69%
Total Meals	105,511 meals	34%
Animals Impacted	1,890 pets	52%

Pet Pantry

Since opening in 2020, the **Stay SAFe Pet Pantry** has expanded to include weekly drop-by hours and scheduled supply pickups. Once distributing fewer than 10,000 meals a year, the Pet Pantry provided **over 100,000 meals** to pets in need in 2024!

Community Clinic Growth



Thank you for making a challenging situation much more manageable and for demonstrating such a high level of **professionalism and kindness.**

Client, Community Wellness Clinic